

## THANK YOU FOR PURCHASING A TANAGER PRODUCT

It takes a dedicated group of talented people many, many hours to produce one of our software titles. The costs of designing, developing, marketing and supporting each title must be recovered through software sales.

We work very hard to produce fun, informative, easy to use software products. Please do not make illegal copies of this software. Everyone who worked on this product appreciates your honesty and integrity.

JEFFREY S. SILVERMAN, PRESIDENT  
TANAGER SOFTWARE PRODUCTIONS

### PLEASE DO NOT MAKE ILLEGAL COPIES OF THIS SOFTWARE

This software and User's Guide are protected by federal copyright law. Copying software for any reason other than to make a backup is a violation of law. Individuals who make unauthorized copies of software may be subject to civil and criminal penalties.

## TABLE OF CONTENTS

INTRODUCTION .....	2
YOUR JOURNEY IS ABOUT TO BEGIN .....	2
INSTALLATION .....	3
GENERAL KEYBOARD INSTRUCTIONS .....	5
GENERAL MOUSE INSTRUCTIONS .....	6
SIGNING-IN .....	6
WHAT IS C.Y.P.H.E.R.? .....	7
WHAT IS L.U.R.K. ....	8
SECURITY CLEARANCE .....	8
C.Y.P.H.E.R. HEADQUARTERS .....	9
INDEPENDENCE, U.S.A. ....	13
GALLERY OF PRESIDENTS .....	15
THE MICROSCAN WATCH .....	17
SCORING .....	21
EDUCATIONAL SECTION .....	22
BIBLIOGRAPHY .....	24
LIMITED WARRANTY .....	26
TANAGER LICENSE AGREEMENT .....	27

## INTRODUCTION

You are back in action in the latest C.Y.P.H.E.R. adventure, exploring the life and times of the U.S. Presidents as you race to crack the secret codes.

As a C.Y.P.H.E.R. secret agent, you will visit the magnificent Gallery of Presidents and put your knowledge of presidential trivia and American history to the test. If you need a little help just access your handy electronic FunCyclopedia®, the ultimate secret agent resource! Scan through the presidential portraits, achievements, famous sayings, historical events, follow the growth and development of the U.S. and much, much more.

Language, problem-solving and logic skills all come into play in this exciting adventure. Great fun for ages 8 through adult.

### YOUR JOURNEY IS ABOUT TO BEGIN . . .

As you step out of the hotel elevator you quickly scan the hallway. It is deserted except for a few potted palms and ashtrays filled with the cleanest sand you have ever seen. You turn to your right, having already memorized and swallowed your directions. Is there a drinking fountain nearby?

One more quick glance over your shoulder — it wouldn't be prudent to lead a L.U.R.K. Agent into the pulsating heart of C.Y.P.H.E.R. headquarters.

#### WOODROW WILSON

Profession  
Teacher

Favorite Food  
Ham and Eggs

Year of Birth  
1856

#### ULYSSES S. GRANT

Favorite Sport  
Baseball

Year of Birth  
1822

Educated At  
West Point

The door to the Service Room swings open effortlessly. A woman in a hot pink bathrobe is bent over the ice machine, filling her bucket. You watch her suspiciously as she pads out and down the hallway. All clear.

There it is, in the corner of the room. Your pulse quickens as you stare into the shiny surface of your dreams . . . The Laundry Chute! A faint whirring noise caresses your ears as the chute door lifts up. As you peer into the darkness you can just barely make out a tiny glowing "C".

You take a deep breath — that chute looks like a tight fit — and plunge head first into the dark chasm, knowing you're either very brave or a fool.

It's a rough ride but luckily a soft landing awaits. The laundry cart rolls to a halt in front of a giant wall screen. You're in! You've made it to the Operation U.S. Presidents sign-in. Now if you could just remember that password . . .

## INSTALLATION

This section provides instructions for installing and starting **Operation U.S. Presidents**.

You can play the game from floppy disk, but for smoother game play we recommend you install **Operation U.S. Presidents** onto your hard drive.

#### JOHN TYLER

Educated At  
William & Mary

Favorite Food  
Oysters

Year of Birth  
1790

#### GROVER CLEVELAND

Favorite Sport  
Fishing

Year of Birth  
1837

Profession  
Lawyer

**MARTIN  
VAN BUREN**Electoral Vote  
170Favorite Sport  
WalkingYear of Birth  
1782

If you are playing from floppy disk, make a copy of the program disk (s), put the original disk (s) away and play from your copy.

**Hard Drive Installation**

1. Insert either the **3.5" disk** or **Disk 1** of the 5.25" disk set into your disk drive. Type the **letter of the drive** the disk is in, followed by a **colon (a: or b:)**, and press **ENTER**.
2. At the A:\ > or B:\ > prompt, install the program onto your hard drive by typing **INSTALL**. The game will be installed onto your C drive in the directory **CYPHEROP**.
3. If you are using the 5.25" version you will need to insert **Disk 2** during installation. Follow the directions on your screen.
4. To play, change directories to **C:\CYPHEROP** and type **OP**.

**Playing From Disk**

1. To play from floppy disks, insert either the **3.5" disk** or **Disk 1** of the 5.25" disk set into your disk drive. Type the **letter of the drive** the disk is in, followed by a **colon (a: or b:)**, and press **ENTER**.
2. Type **OP** to begin playing.
3. If you are using the 5.25" version you will need to swap disks during the game. Follow the directions on your screen. **NOTE:** The game is playable from one 5.25" high density disk. To do this, copy all files from either your 3.5" disk or both 5.25" disks.

**WILLIAM  
TAFT**Popular Vote  
7,678,908Favorite Sport  
BaseballEducated At  
Yale**Setting Preferences**

The program will automatically check your machine and select the best graphics and sound modes available (except for Roland sound). It will also check to see if you are using a mouse with a Microsoft compatible driver.

If you want to play the game in different settings, after you type **OP** add from the following choices:

- ADL** for AdLib/SoundBlaster sound
- ROL** for Roland sound
- INT** for Internal speaker
- VGA** for VGA graphics
- MCGA** for MCGA graphics
- EGA** for EGA graphics
- TGA** for Tandy 16-color graphics
- KEY** for Keyboard control only (no mouse)

For example, if you have VGA graphics and a Roland sound card and want to see the game in EGA mode, type: **OP EGA ROL**.

**GENERAL KEYBOARD INSTRUCTIONS**

In most cases, use:

**ARROW KEYS** to highlight a selection

**ENTER** to make your selection

**FUNCTION KEYS** to perform actions or go to locations represented by a picture labeled with that function key

**JAMES E.  
CARTER**Popular Vote  
40,291,626Favorite Food  
ButtermilkProfession  
Farmer**MILLARD  
FILLMORE**Year of Birth  
1800Birth State  
New YorkProfession  
Lawyer

**ALT-S** to toggle sound on and off

**ALT-Q** to quit

**ALT-N** to begin a new mission

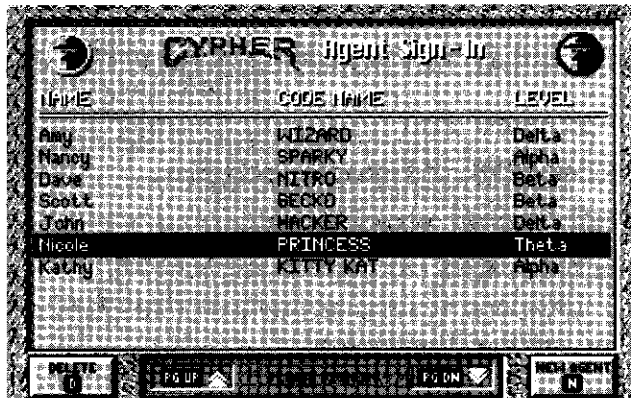
**ESC** to jump from the title screen to sign-in or to back up while in C.Y.P.H.E.R. Headquarters

## GENERAL MOUSE INSTRUCTIONS

Move the mouse cursor over an object to highlight. Click the left mouse button to make your selection. To perform actions or go to locations represented by a picture, click directly on the picture.

## SIGNING-IN

**NEW AGENTS:** You will need to enter your name and select a code name. Select **New Agent** with the **N** key. Type in your name and press **ENTER**. Now select a code name by using the arrow keys to highlight your choice and press **ENTER**. You can also type in your own code name by selecting **MY OWN** with the **M** key. Type in a code name and press **ENTER**.



**RETURNING AGENTS:** Use the arrow keys and PG UP/PG DN keys to highlight your name from the list of Agents and press **ENTER**.

## Deleting A Player

There is room for up to 40 registered Agents at any one time. To delete an Agent, press the **D** key. Highlight the Agent you wish to delete, and press **ENTER**. BE CAREFUL! Once you delete an Agent, that player file is erased and can never be retrieved.

## WHAT IS C.Y.P.H.E.R.?

C.Y.P.H.E.R. stands for **C**ourageous **Y**oung **P**artners in **H**ush-Hush **E**lectronic **R**adiotelegraphy. C.Y.P.H.E.R. is a top-secret organization which provides its clients with a confidential message delivery system, allowing them to send secret telegrams to one another. A message, called a CYPHERGRAM, is coded and broken up into pieces before being sent out to the city where the client is located. As an Agent, your mission is to locate the message pieces and then decode and deliver the CYPHERGRAM to the client.

As an Operation U.S. Presidents Agent, you have received special training to help you follow a trail of clues about the Presidents and American history. During your mission, you must confirm your identity by contacting the C.Y.P.H.E.R. Main Computer, secretly accessible in the Gallery of Presidents.

### FRANKLIN D. ROOSEVELT

Profession  
Lawyer

Year of Birth  
1882

Favorite Sport  
Sailing

### RONALD REAGAN

Educated At  
Eureka College

Favorite Food  
Jelly Beans

Profession  
Actor

### WILLIAM H. HARRISON

Popular Vote  
1,275,017

Favorite Sport  
Horseback Riding

Electoral Vote  
234

## WHAT IS L.U.R.K.?

L.U.R.K. stands for **L**oathsome **U**nderhanded **R**otten **K**rooks. They will do anything in their power to steal your CYPHERGRAMS. Whatever they get their hands on they will try to decode and sell to the highest bidder. Luckily for you, they are not the brightest group of crooks (look how they spell "crooks"!), and they usually manage to ruin their own devious, underhanded plans.



But watch out! They're not completely harmless. If you make a wrong move they can make your life difficult by scaring away your C.Y.P.H.E.R. contacts, and it will take you longer to collect the entire CYPHERGRAM. If

you run out of watch power, that's just the chance they need to steal your top-secret information.

## SECURITY CLEARANCE

After you have signed in, you must go through Security Clearance. As part of that clearance, you will need your Operation U.S. Presidents **User's Guide**. You will be asked to enter information found in the margins of your User's Guide. You must enter the information correctly or you will not pass the security check.

**FRANKLIN  
PIERCE**

Educated at  
**Bowdoin**

Favorite Sport  
**Hunting**

Losing Candidate  
**Winfield Scott**

Be careful not to lose your User's Guide. No Guide, no game. If you have registered your software and you lose the User's Guide, call us between 9 a.m. and 5 p.m. PST at (510) 430-0900 and we'll tell you how to purchase a new one.

## C.Y.P.H.E.R. HEADQUARTERS

All Operation U.S. President activities are controlled through C.Y.P.H.E.R. Headquarters. Here assignments are handed out, agent contacts in the field are coordinated, and agent progress is tracked.

## C.Y.P.H.E.R. Mission Options

At Mission Options you can set your preferences for each new mission. Use the arrow keys to move the highlight onto your selection. Press the **SPACE-BAR** to register each choice. These are the things you can set for each mission:

### Assignment

There are two types of Assignments: (1) Client CYPHERGRAM or (2) Personal CYPHERGRAM. You can only choose a Personal CYPHERGRAM mission if another Agent has sent a CYPHERGRAM to you.

### Play Level

There are 4 levels of play. First time players should start out at **Beginner** and move up as appropriate.

**CHESTER  
ARTHUR**

Year of Birth  
**1830**

Favorite Food  
**Lamb Chops**

Favorite Sport  
**Canoeing**

**HERBERT  
HOOVER**

Popular Vote  
**21,391,381**

Favorite Food  
**Lobster**

Profession  
**Engineer**

**JOHN QUINCY ADAMS**

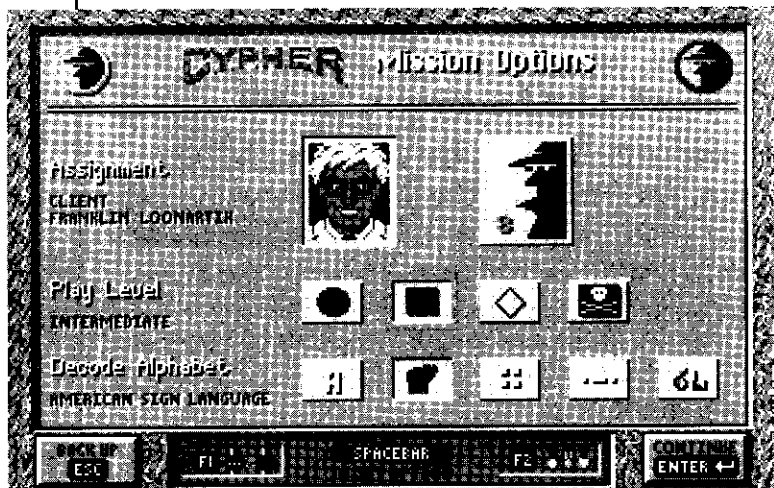
Popular Vote  
105,321

Favorite Sport  
Billiards

Educated At  
Harvard

LEVEL	RECOMMENDED FOR
Beginner	New Agents & Youngsters
Intermediate	Experienced Agents
Advanced	Ace History Buffs
Expert	History Wizards looking for the ultimate challenge!

This chart is only a guideline. Play at whatever level you like! The harder the level, the tougher the clues will be. You also get fewer units of energy at the harder levels.



**Decode Alphabet**

You can decode CYPHERGRAMS in 5 different alphabets. The default alphabet is English. For an added challenge, choose American Sign Language, Braille, Morse Code or Semaphore.

From C.Y.P.H.E.R. Mission Options two additional activities are available.

**Send A CYPHERGRAM**

Agents can send each other personal messages. Use this option to send a message to any Agent currently listed on the Sign-In screen. The next time that Agent signs in, there will be a personal CYPHERGRAM waiting in their mailbox.

To send a personal message to another C.Y.P.H.E.R. Agent, both sender and recipient must be currently signed-in with Operation U.S. Presidents. In C.Y.P.H.E.R. Headquarters, select the **Send A CYPHERGRAM (F1)** option. Select the name of the Agent you wish to send your message to by highlighting the name and pressing **ENTER**. Now type in your name on the **FROM:** line and press **ENTER**.

Now you can type in your message. You can only use letters, no symbols or numbers except the \* (SHIFT + 8) to signify sentence breaks. The CYPHERGRAM will be sent exactly as you type it.

When you have finished typing in your message, press the **F1** key to send it. If you want to cancel your message, press the **F2** key.

**Review Dossier**

At C.Y.P.H.E.R. Headquarters, your progress and mission achievements are tracked and recorded in

**JAMES A. GARFIELD**

Profession  
Teacher

Favorite Sport  
Billiards

Losing Candidate  
Winfield Hancock

**HARRY S. TRUMAN**

Electoral Vote  
303

Favorite Food  
Brownies

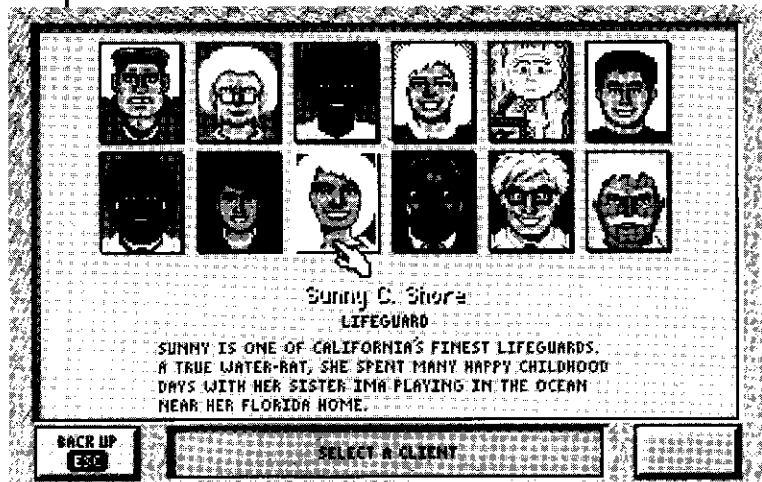
Favorite Sport  
Walking

your **Dossier**. Review your Dossier (**F2**) to see how you are doing. Stars of Excellence are each earned by completing missions without any incorrect president answers. Medals of Excellence are each earned by completing 5 missions in an alternate decoder alphabet.

### Picking A Client

Once you have set your Mission Options you are ready to get your first mission assignment. There are 16 clients to choose from. Each client has an interesting story which will unfold as you play a series of 10 games with that client.

Use the arrow keys to look through the client list. When you find one that interests you, take a



moment to read that client's biography, it will help you in decoding the CYPHERGRAMS. Press **ENTER** to select a client.

If you are a returning Agent, you can review your client's case file. All the CYPHERGRAMS sent to and from your client may be reviewed.

### Final Briefing

In Final Briefing you'll receive some last minute instructions. You'll find out which L.U.R.K. Agent has been spotted recently in Independence and how many units of energy your microscan watch has been charged with. Now you are ready to begin your mission!

### INDEPENDENCE, U.S.A.

You're out in the big city. L.U.R.K. Agents lurk at every corner waiting for you to make a false step. Your best defense is to accomplish your mission with as few slip-ups as possible.

As you face the city, you are holding 3 **C.Y.P.H.E.R. Contact Sheets**. The addresses on these sheets show the locations of C.Y.P.H.E.R. Contact Agents stationed in one of the 5 districts of Independence.

Flip through your **Contact Sheets (F2)**. Take a close look at those street addresses; all the street names are somehow related. They may all be names of American Explorers, Government Agencies, or some other category of Americana. Then put your Contact Sheets away (**F1**) and take a look at the five districts of Independence.

#### THOMAS JEFFERSON

Year of Birth  
1743

Favorite Food  
Olives

Favorite Sport  
Fishing

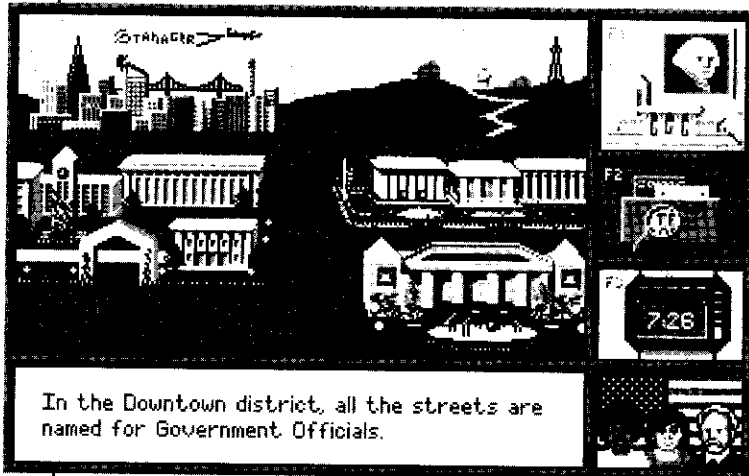
#### BENJAMIN HARRISON

Favorite Sport  
Ice Skating

Educated At  
Miami University

Electoral Vote  
233

The arrow keys will move you from district to district. At the bottom of the screen you will see a sentence like: "In the Downtown district, all the streets are named for Government Officials." In the lower right hand corner of the screen there will be a corresponding picture.



**ANDREW JACKSON**  
 Year of Birth  
 1767  
 Favorite Food  
 Venison  
 Favorite Sport  
 Cockfighting

Match your contact sheets to the correct district and press **ENTER** to go to that district. If you choose correctly, you will meet up with a C.Y.P.H.E.R. Agent who will transmit a piece of the CYPHERGRAM directly into your watch. If you choose incorrectly, you are certain to run into a L.U.R.K. Agent! You will have to search for your 3 Contact Agents in one of the other districts.

If you need help matching the Contact Sheets with the district, use your FunCyclopedia® and look at the **STREET NAMES** section.

Each of your 3 Contact Agents has a presidential clue for you. The clues are scanned into your watch and stored there for you to review at any time. All 3 clues refer to the same president. Use these clues to guide you to a contact point in the Gallery of Presidents.

Your clues may contain biographical information on a president or refer to an historical event which occurred during the president's term of office. As soon as you think you can identify the president, proceed to the Gallery Of Presidents (**F1**).

If you are not sure you can identify the president, you may want to use the FunCyclopedia® built into your watch. Read about your Microscan Watch on page 17 of this manual.

### GALLERY OF PRESIDENTS

Once you get your presidential clues, the C.Y.P.H.E.R. Main Computer waits for you to confirm your identity in the **Gallery Of Presidents** at the correct presidential portrait.

#### The Lobby

In the **Lobby** of the Gallery you can pick which of the 5 historical eras you want to enter: Birth of Democracy (**B**), A Growing Nation (**G**), Civil War to World Leader (**C**), A Runaway Economy (**R**), Modern America (**M**).

**RICHARD M. NIXON**

Favorite Sport  
**Bowling**

Year of Birth  
 1913

Profession  
**Lawyer**

**CALVIN COOLIDGE**

Popular Vote  
 15,725,016

Educated At  
**Amherst**

Favorite Sport  
**Fishing**





**ABRAHAM LINCOLN**

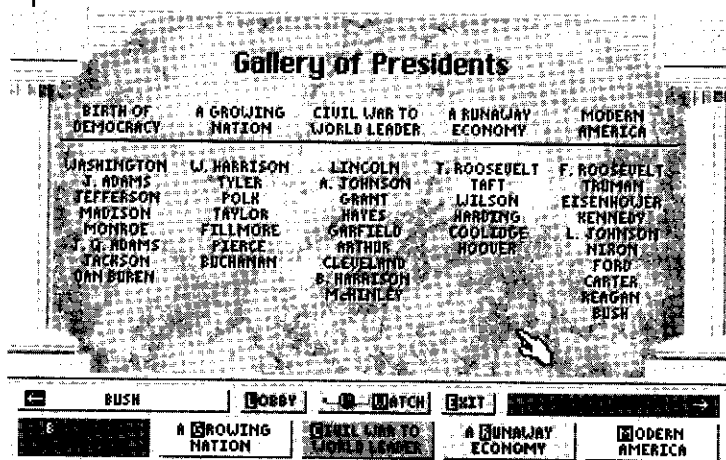
Year of Birth  
1809

Favorite Sport  
Billiards

Profession  
Lawyer

The right arrow will take you to the first president and the left arrow will take you to the last.

In the Gallery, you can view the Presidential Portraits along with maps of the growing nation. The **UP** and **DOWN** arrows toggle between a famous Presidential Quote and the Map Legend.



GALLERY NOTE - Alaska and Hawaii are not shown in their correct geographical locations.

To select the president which matches your 3 clues, press **ENTER** when you arrive at his portrait. If you choose correctly, you will be able to continue on your mission. If you are incorrect, you will receive a new Contact Sheet to collect another clue to the same president.

### THE MICROSCAN WATCH

All C.Y.P.H.E.R. Agents are issued a **Microscan Watch**. It's an incredible time piece that serves as a portable "wrist top" computer. You can access your watch from anywhere in the game. Out in the City, use the **F3 key**. In the Gallery, use **W**.

In the watch, the **F1** key takes you back to where you left off in the game and puts your watch away. The **F2** key takes you back one watch screen.

The main menu for the watch has four options:

#### Review Clues

No need to write down the presidential clues you get from your contacts. Your watch keeps track of them all right here.

#### Save/Abort

This watch option lets you exit or save your game:

**Save Mission:** This saves your game so you can come back and play later.

**WILLIAM MCKINLEY**

Favorite Sport  
Fishing

Losing Candidate  
William Bryan

Year of Birth  
1843

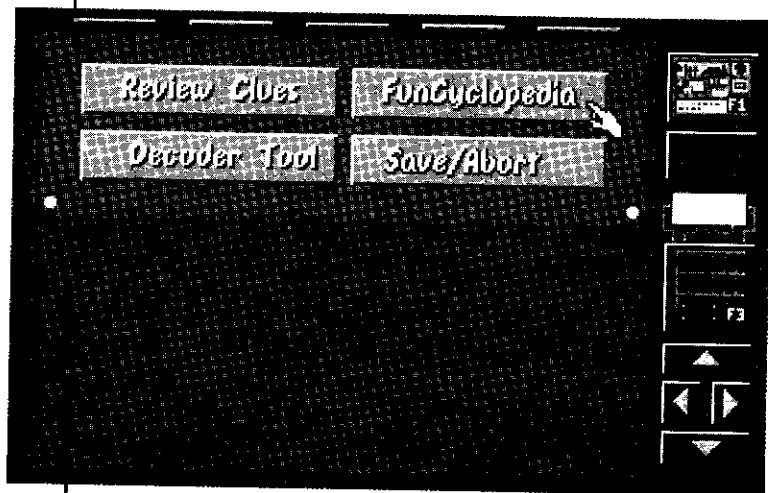
**JOHN F. KENNEDY**

Profession  
Author

Favorite Food  
Cinnamon Toast

Electoral Vote  
300

**Start Over:** Not happy with the way you started out? This option will cancel your mission and let you start over or select a new player.



**Quit Game:** This takes you back to DOS without saving your current game.

**FunCyclopedia®**

All Agents need a little help now and then. The FunCyclopedia® is an on-line database containing all the information you need to complete missions.

**Presidents:** Divided by Historical Era, the Presidents and all their clue information can be found here. Look up Teddy Roosevelt's First Lady, or just browse through the Modern American era. The up and down arrows take you through the pages of a single president's information, while the left and right arrows take you from president to president.

**Streets:** Look through the lists of street names used in the game. They are divided by subject.

**Alphabets:** Here you will find all of the optional decoder alphabets and their translations. There is also a short descriptive paragraph on each.

Using the FunCyclopedia® does drain your watch power, however. Once you go into one of the 3 categories, you will lose one unit of watch energy. As long as you stay within the watch, you can look through as much information as you want without using any additional energy units. So you can go back and forth between Review Clues and Presidents as long as you don't exit the watch entirely.

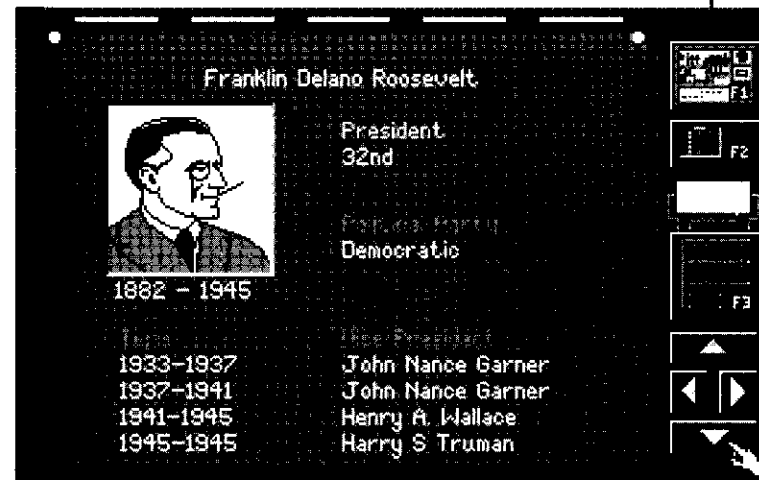
**ZACHARY TAYLOR**

Popular Vote  
1,360,099

Favorite Food  
Gumbo

Losing Candidate  
Lewis Cass

**JAMES MONROE**  
Favorite Food  
Chicken  
Year of Birth  
1758  
Favorite Sport  
Swimming



**Decoder Tool**

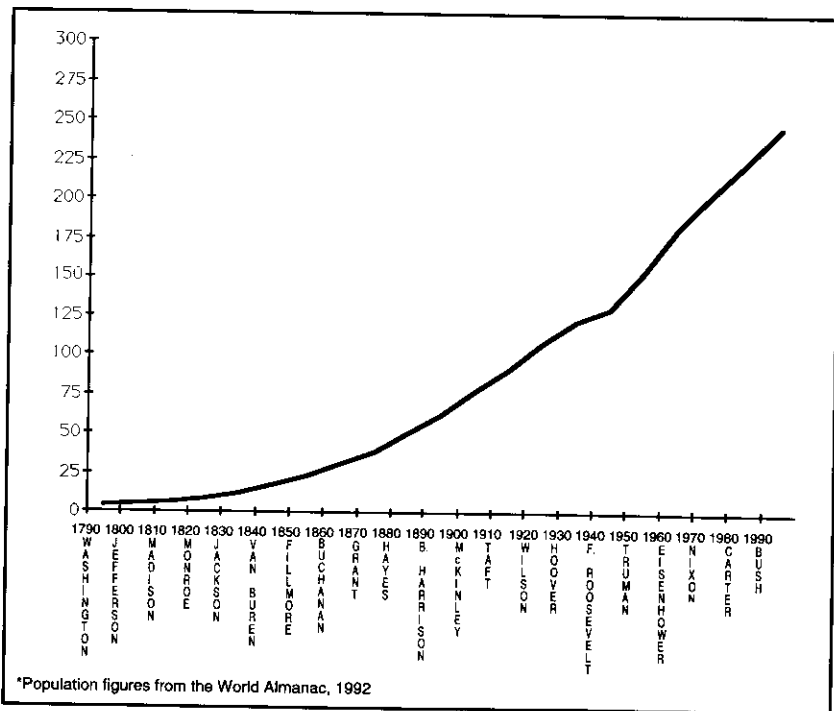
Once you've collected the entire CYPHERGRAM you are ready to begin decoding. Once you start

## EDUCATIONAL SECTION

While C.Y.P.H.E.R. is a game in every sense of the word it also has enormous educational value. This section focuses on the educational material inside the game.

### U.S. Population 1790 - 1990

(In Millions)



The population of the United States has grown amazingly over its 200+ year history. When George Washington became our first president there were about 3.9 million people in the country. That is about the same number as live in the city of Los Angeles today!

## Operation U.S. Presidents Clue Categories

The different types of clues in Operation U.S. Presidents are designed to present a view of the President as an individual, as a leader of the United States of America and of the world as it was during each president's administration.

### Biographical

Birth Date  
Birth State  
First Lady  
Interesting Facts  
Nickname & Reason

### Presidential

Terms of Office  
Political Party  
Vice-President  
Achievements

### Historical

Historic Events  
Inventions & Innovations

### Table of Important Events By Historical Era

Birth of Democracy	Washington - Van Buren
Constitution written	1787
First U.S. political parties developed	1790's
Louisiana Purchase	1803
War of 1812	1812 - 1814
Erie Canal opened	1825
A Growing Nation	W. Harrison - Buchanan
Mexican War	1846 - 1848
Gold Rush	1848
Gadsden Purchase	1853
Kansas-Nebraska Act	1854
Civil War to World Leader	Lincoln - McKinley
Civil War	1861 - 1865
Emancipation Proclamation	1863
Alaska Purchase	1867
Telephone invented	1876
Spanish-American War	1898

### JAMES BUCHANAN

Popular Vote  
1,838,169

Favorite Sport  
Hunting

Losing Candidate  
John Fremont

### LYNDON B. JOHNSON

Year of Birth  
1908

Favorite Sport  
Boating

Electoral Vote  
486

<i>A Runaway Economy</i>		<i>T. Roosevelt - Hoover</i>	
1st successful airplane flight	1903		
Federal income tax began	1913		
World War I	1914 - 1918		
American economy soared	1920's		
Prohibition	1920		
Stock Market crash	1929		
Great Depression	1930's		
<i>Modern America</i>		<i>F.D. Roosevelt - Bush</i>	
World War II (U.S.)	1941 - 1945		
United Nations formed	1945		
Korean War (U.S.)	1950 - 1953		
Cuban Missile Crisis	1962		
Vietnam War (U.S.)	1965 - 1973		
First Man on Moon	1969		
Berlin Wall torn down	1990		
U.S.S.R. dissolved	1991		

### BIBLIOGRAPHY

We at Tanager Software hope this product will encourage you to read more about the history of the United States. We used several invaluable references in compiling the information presented in Operation U.S. Presidents:

- Clements, John *Chronology of the United States*. New York: McGraw Hill, 1975
- de Bono, Edward *Eureka! an illustrated history of inventions from the wheel to the computer*. London: Thames and Hudson, Ltd, 1974
- DeGregorio, William A. *The Complete Book of U.S. Presidents*. Red Dembner Enterprises Corp., 1984
- Facts On File, Inc. *Facts On File 1988 - 1991*. New York: 1988 - 1991

- Giscard d'Estaing, Valérie-Anne *The Second World Almanac Book of Inventions*. New York: World Almanac, 1986
- Herman, David *The Simon & Schuster Young Readers' Guide to Dates & Events*. New York: Wanderer Books, 1986
- Holt, Rinehart & Winston *The Presidents Speak*. New York: 1969
- Kane, Joseph Nathan *Facts About the Presidents. 5th edition*. New York: H.W. Wilson Co., 1989
- McLoone-Basta, Margo and Alice Siegel *The Kids' World Almanac of Records And Facts*. New York: World Almanac Publications, 1985
- McLoone-Basta, Margo and Alice Siegel *The Second Kids' World Almanac of Records And Facts*. New York: World Almanac Publications, 1987
- The National Geographic Society *Inventors And Discoverers Changing Our World*. Washington, D.C.: 1988
- Newspaper Enterprise Association Inc. *The World Almanac And Book of Facts 1986*. New York: 1986
- Taylor, Tim *The Book of Presidents*. New York: Arno Press, 1972.
- Whitney, David C. *The American Presidents. New expanded 5th edition*. New York: Doubleday, 1982
- Wilson, Vincent Jr. *The Book of the Presidents*. Indiana: R.R. Donnelley & Sons Company, 1989
- World Book, Inc. *The World Book Encyclopedia*. U.S.A.: 1989

**JOHN ADAMS**

Favorite Sport  
**Hunting**

Year of Birth  
**1735**

Losing Candidate  
**Aaron Burr**

**THEODORE ROOSEVELT**

Electoral Vote  
**336**

Favorite Sport  
**Boxing**

Year of Birth  
**1858**

**JAMES MADISON**

Favorite Food  
**Ice Cream**

Year of Birth  
**1751**

Favorite Sport  
**Walking**

**GERALD R. FORD**

Birth State  
**Nebraska**

Year of Birth  
**1913**

Favorite Sport  
**Golf**

**LIMITED WARRANTY**

Tanager Software Productions warrants to the original consumer purchaser of this computer software product that the recording medium on which the software programs are recorded will be free from defects in materials and workmanship under normal use for a period of ninety (90) days from the date of purchase. If the recording medium is found defective within ninety (90) days of original purchase, Tanager agrees to replace, free of charge, any such product upon receipt at its Factory Service Center of the product, postage paid, with proof of purchase. This warranty is limited to the recording medium containing the software program originally provided by Tanager Software Productions. This warranty shall not be applicable and shall be void if the defect has arisen through abuse, mistreatment or neglect. Any implied warranties applicable to this product are limited to the ninety (90) day period described above.

If the recording medium should fail after the original ninety (90) day warranty period has expired, you may return the software program, postage prepaid, to Tanager Software Productions at the address noted below with a check or money order for \$7.50 (U.S. currency), and Tanager will mail a replacement to you. To receive a replacement, you should enclose the defective medium (including the original product label) in protective packaging accompanied by proof of purchase, a statement of the defect, your name and return address, and a check for \$7.50.

Tanager Software Productions reserves the right to make improvements in the product described in this manual at any time and without notice.

THE SOFTWARE, DISKETTES, AND DOCUMENTATION ARE PROVIDED "AS IS." THERE IS NO WARRANTY OF MERCHANTABILITY, NO WARRANTY OF FITNESS FOR A PARTICULAR USE, AND NO OTHER WARRANTY OF ANY KIND, EITHER EXPRESSED OR IMPLIED REGARDING THE SOFTWARE, DISKETTES, OR DOCUMENTATION, EXCEPT AS EXPRESSLY PROVIDED IN THE PRECEDING PARAGRAPH. ACCORDINGLY, THE ENTIRE RISK AS TO THE USE, RESULTS AND PERFORMANCE OF THE SOFTWARE, DISKETTES, AND DOCUMENTATION IS ASSUMED BY YOU. IN NO EVENT WILL TANAGER SOFTWARE PRODUCTIONS BE LIABLE TO YOU OR ANYONE ELSE FOR ANY CONSEQUENTIAL, SPECIAL, OR INDIRECT DAMAGES RESULTING FROM POSSESSION, USE, OR MALFUNCTION OF THIS PRODUCT, INCLUDING WITHOUT LIMITATION, DAMAGE TO PROPERTY AND, TO THE EXTENT PERMITTED BY LAW, DAMAGES FOR PERSONAL INJURY, EVEN IF TANAGER SOFTWARE PRODUCTIONS HAS BEEN ADVISED OF THE POSSIBILITY OF ANY SUCH DAMAGES OR LOSS. SOME

STATES DO NOT ALLOW LIMITATIONS ON THE DURATION OF IMPLIED WARRANTIES AND/OR THE EXCLUSION OR LIMITATION OF INCIDENTAL OR CONSEQUENTIAL DAMAGES, AND THUS THE PRECEDING LIMITATIONS AND/OR EXCLUSIONS AND LIMITATIONS MAY NOT APPLY TO YOU. THIS WARRANTY GIVES YOU SPECIFIC LEGAL RIGHTS, AND YOU MAY HAVE OTHER RIGHTS DEPENDING ON THE LAWS IN YOUR STATE. YOU AGREE THAT THE LIABILITY OF TANAGER SOFTWARE PRODUCTIONS ARISING OUT OF ANY KIND OF LEGAL CLAIM (WHETHER IN CONTRACT, TORT, OR OTHERWISE) WILL NOT EXCEED THE AMOUNT YOU ORIGINALLY PAID FOR THE USE OF THIS PRODUCT.

Tanager Software Productions, 1933 Davis St., Ste. 208, San Leandro, CA 94577.

This manual and the software accompanying it are copyrighted, with all rights reserved by Tanager Software Productions.

**TANAGER LICENSE AGREEMENT**

You may use one copy of the software on a single computer terminal connected to a single computer. You may make one copy of the software for archival purposes, or copy the software onto the hard disk of your computer and retain the original for archival purposes. No part of this manual or any of the accompanying materials may be copied, reproduced, modified, or translated in any form or medium without the prior written consent of Tanager Software Productions.

**RUTHERFORD HAYES**

Electoral Vote  
185

Favorite Sport  
Croquet

Losing Candidate  
Samuel Tilden

**WARREN G. HARDING**

Favorite Sport  
Golf

Profession  
Journalist

Electoral Vote  
404

**CALVIN COOLIDGE**

Electoral Vote  
382

Educated At  
Amherst

Favorite Sport  
Fishing